

# COMEGE

**MANUFACTURER OF LIFTING DEVICES**  
FRENCH LEADER FOR JIB CRANES, GANTRY CRANES AND SPREADER BEAMS



300

300T

500

500T

600

600T

## POTALU

ALUMINIUM LIFTING EQUIPMENTS  
ALU REMOVABLE JIB CRANE

**Valid from the 1<sup>st</sup> of february 2025**

All prices in NOK eks. mva. Ex. Works, France

# ALU REMOVABLE JIB CRANE



## ALU REMOVABLE JIB CRANE

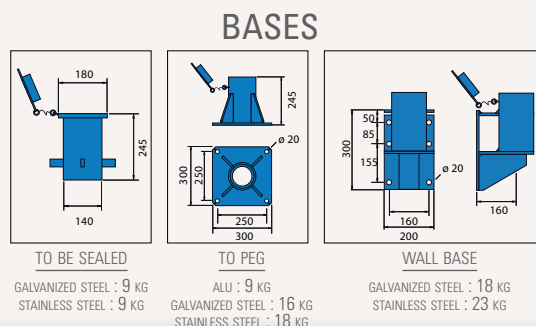
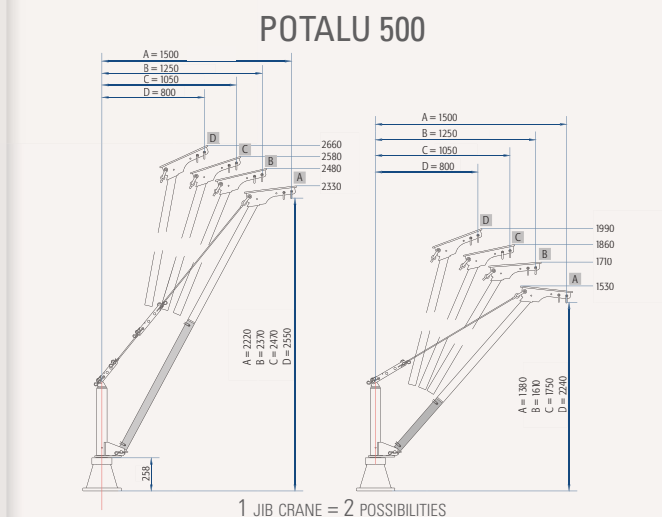
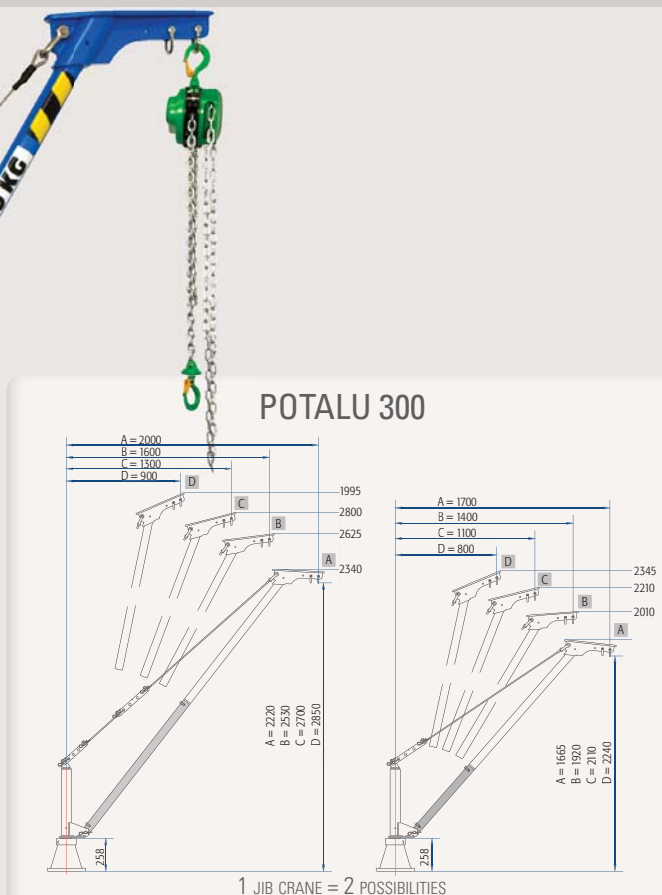
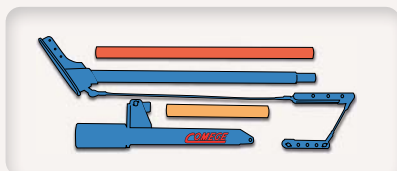
Removable lifting solution, efficient and safe the jib crane POTALU contributes to improving the responsiveness of your teams.

Its aluminum frame guarantee you maximum portability and facilitates interventions on sites difficult to access. A single man can so proceed safely to the assembly of 3 elements which compose the jib crane POTALU. ■

### 1 JIB CRANE = 1 BAG OF 24 KG

Carry bag (included) gives your team the ideal tool for interventions on site quickly and efficiently. All the parts that make up the POTALU is grouped into one sturdy bag.

A single person can carry the jib crane, assemble, place on the base and make the lift safely.



To meet all your mounting configurations, we offer a range of accessories to facilitate the implementation of our aluminum jib crane on your sites. The use of several sockets for the same jib crane greatly enhances handling costs



MOUNTING ON THE SOCKET



ASSEMBLY OF THE EXTENSION



ARM ASSEMBLY



FIXATION WITH PULLING THE PIN



IMPLEMENTATION OF THE HOIST

# ALU REMOVABLE JIB CRANE WITH WINCH

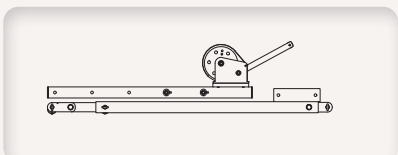
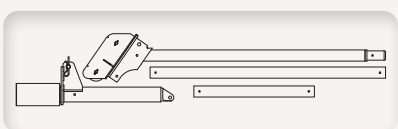


## ALU REMOVABLE JIB CRANE WITH WINCH

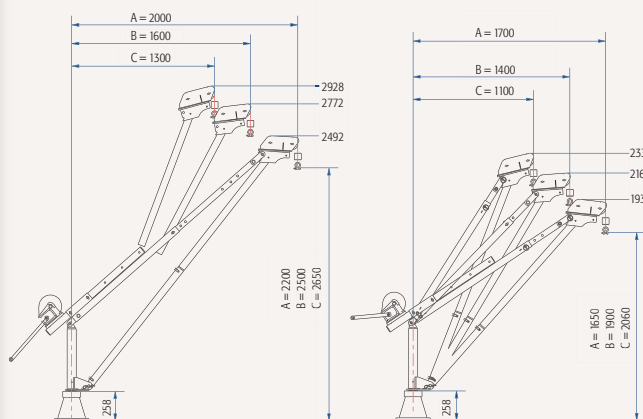
Get in standard 8 spanheight couples. It is the ideal jib crane for lifting loads in treatment plant or by the sea, and generally anywhere a standard jib crane can not be used. Secure sockets and enjoy the lightness of a single removable jib crane for many configurations. ■

### 1 JIB CRANE WITH WINCH = 2 BAGS OF LESS THAN 24 KG

To minimize the risks due to carrying heavy loads, the components of the POTALU are grouped into two bags robust. A single person can carry the jib crane, assemble on the socket and make the lift safely.

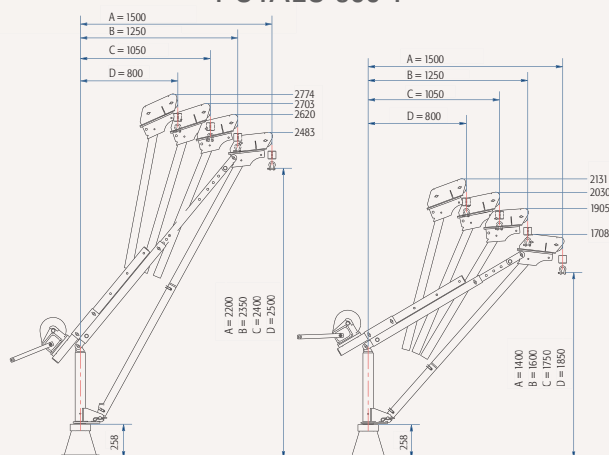


## POTALU 300 T



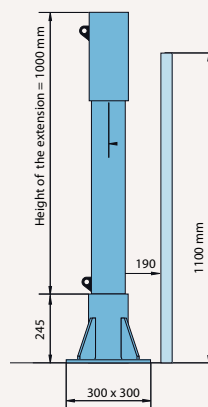
1 JIB CRANE = 2 POSSIBILITIES

## POTALU 500 T



1 JIB CRANE = 2 POSSIBILITIES

## EXTENSION



The extension allows the guardrail crossing or increase the lift height. It is for the user to ensure the proper anchoring and quality of the support of the socket before any use of jib crane.



MOUNTING ON THE SOCKET



ARM ASSEMBLY



FIXATION WITH PULLING THE PIN



CABLE ENTRY



MAKE LIFTING

## POTALU 300

ALU

INT

EXT



### Description

- SWL = **300 Kg.**
- Adjustable span from 800 mm to 2 000 mm.
- 2 heights available (2 extensions provided).
- Jib crane in 4 parts / fast and easy installation.
- Set weight = less than 24 Kg.
- Bag provided.
- Different type of fixation.

**30 432, -**

## POTALU 300T

ALU

INT

EXT



### Description

- SWL = **300 Kg.**
- Adjustable span from 800 mm to 2 000 mm.
- 2 heights available (2 extensions provided).
- Jib crane in 4 parts / fast and easy installation.
- Set weight = less than 24 Kg.
- Bag provided.
- Different type of fixation.
- Hand lifting winch.

**47 600, -**



## POTALU 500

ALU

INT

EXT



### Description

- SWL = **500 Kg.**
- Adjustable span from 800 mm to 1 500 mm.
- 2 heights available (2 extensions provided).
- Jib crane in 4 parts / fast and easy installation.
- Set weight = less than 24 Kg.
- Bag provided.
- Different type of fixation.

**26 680, -**

## POTALU 500T

ALU

INT

EXT



### Description

- SWL = **500 Kg.**
- Adjustable span from 800 mm to 1 500 mm.
- 2 heights available (2 extensions provided).
- Jib crane in 4 parts / fast and easy installation.
- Set weight = less than 24 Kg.
- Bag provided.
- Different type of fixation.
- Hand lifting winch.

**43 920, -**

## POTALU 600

ALU

INT

EXT



### Description

- SWL = **600 Kg.**
- Adjustable span from 900 mm to 1 200 mm.
- Extension provided.
- Jib crane in 4 parts / fast and easy installation.
- Set weight = less than 24 Kg.
- Bag provided.
- Different type of fixation.

**24 530, -**

## POTALU 600T

ALU

INT

EXT



### Description

- SWL = **600 Kg.**
- Adjustable span from 1 050 mm to 1 200 mm.
- Extension provided.
- Jib crane in 4 parts / fast and easy installation.
- Set weight = less than 24 Kg.
- Bag provided.
- Different type of fixation.
- Hand lifting winch.

**43 790, -**

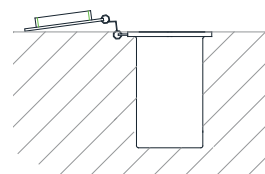
# POTALU'S OPTIONS

## SOCKETS



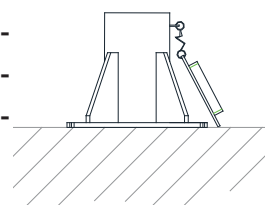
### TO SEAL

Galvanized steel .....	2 520,-
Stainless steel .....	2 665,-



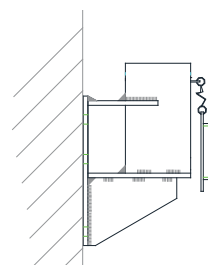
### TO FIX ON THE FLOOR

Aluminium .....	3 670,-
Galvanized steel .....	3 625,-
Stainless steel .....	7 210,-



### WALL MOUNTED

Galvanized steel .....	4 390,-
Stainless steel .....	7 465,-



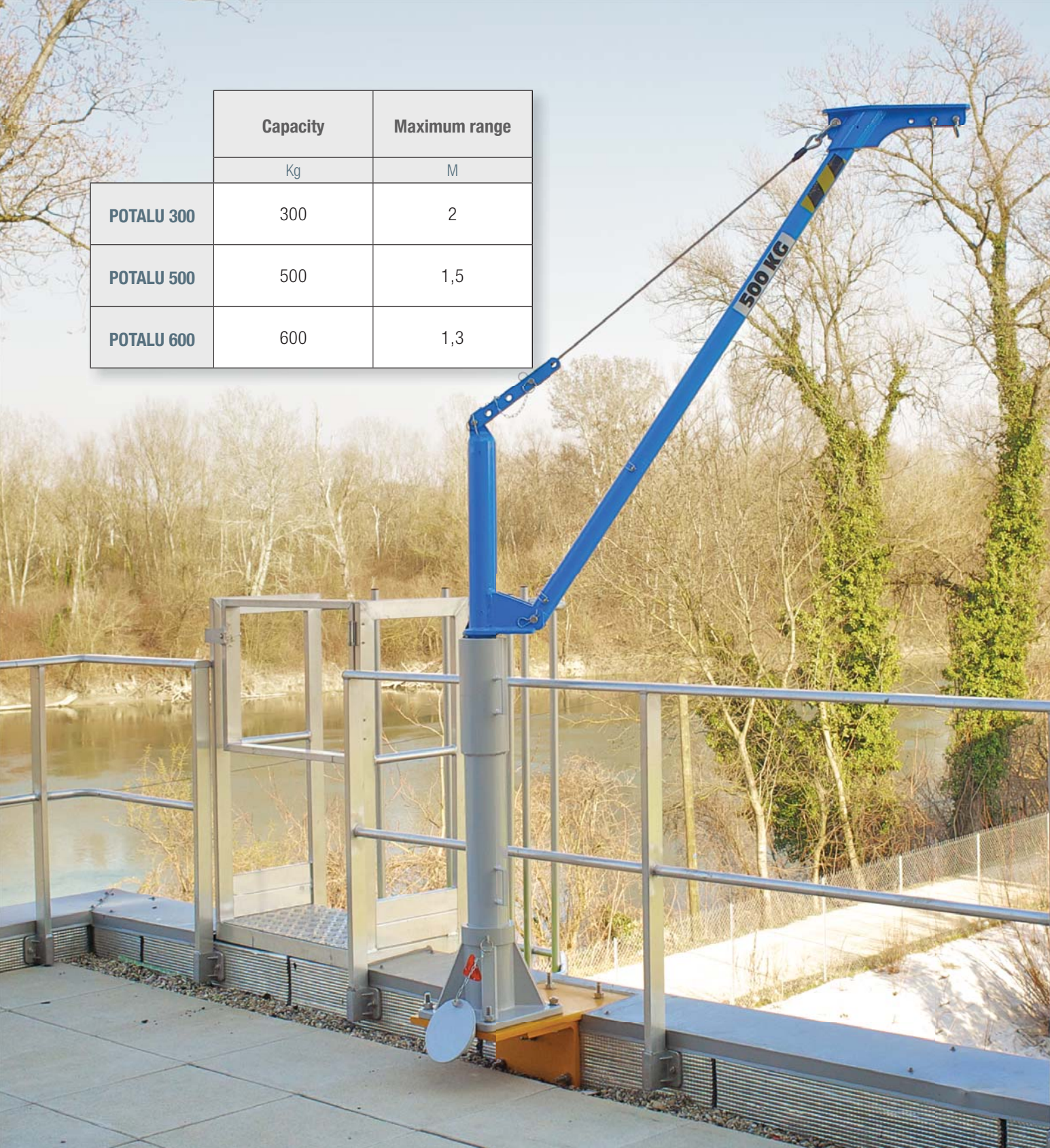
## EXTENSIONS

Height 600 mm .....	8 965,-
Height 800 mm .....	9 440,-
Height 1 000 mm .....	9 985,-
Height 1 250 mm .....	10 990,-





	Capacity	Maximum range
	Kg	M
<b>POTALU 300</b>	300	2
<b>POTALU 500</b>	500	1,5
<b>POTALU 600</b>	600	1,3



**COMEGE**   
**MANUFACTURER OF LIFTING DEVICES**  
 FRENCH LEADER FOR JIB CRANES, GANTRY CRANES AND SPREADER BEAMS

CRANE PARTNER AS  
 Dokkeskjærskaien, Skur 23  
 5006 Bergen, Norway  
 P: +47 55 32 58 00  
 E: [post@cranepartner.no](mailto:post@cranepartner.no)  
[www.cranepartner.no](http://www.cranepartner.no)