

MOSS *Operations Survey System*



The MOSS multi channel indicator is a practical, robust, portable measurement solution solving your autonomous monitoring, logging and surveying needs.

Designed for use within the marine, offshore and construction industries to name a few it features a pragmatic design meaning it is practical and simple to use.

Its adaptable multi-sensor functionality gives you the freedom to develop your own Operation Survey and Monitoring solution utilising load cells and other environmental sensors such as anemometers and temperature or humidity sensors.

Features and benefits:

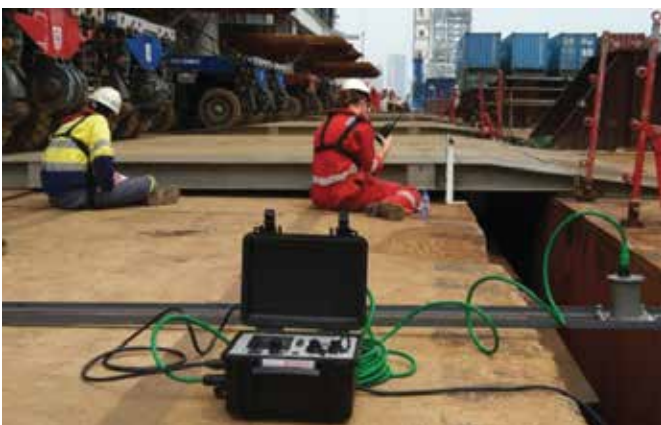
The MOSS model supplied in a portable case that provides readout, presentation and storage of (multiple) sensor signals.

Based on this rugged case the following components are integrated:

- Visualisation screen with user control buttons.
- Battery supply with status display. Long operational time up to 100 hours, fast recharge. (optional extended battery pack available)
- On-board and USB memory for data gathering and storage.
- IP67 connectors for external sensors, battery charge and output functionality.

Applications:

- Mooring measurement
- Salvage survey and monitoring
- Dry docking operations
- Tug and bollard pull testing
- Construction overview
- Piling and boring
- Crane and wire rope monitoring



| MOSS | | Integral Battery Life |
|--------------|--------------------------------------|-----------------------|
| Dimensions | 305 x 270 x 194mm (12 x 10.6 x 7.6") | |
| Weight | 4.5kg (9.92lb) | |
| Sensor | 1-6 | |
| Hz | 1 | |
| Battery Life | 24hrs | |

| Battery Type | External Battery Packs | | | |
|--------------|---------------------------------------|---|---|--|
| | 40ah | 80ah | 100ah | 170ah |
| | Lithium Iron Phosphate (LiFePO4) | | | |
| Dimensions | 300 x 249 x 119mm (11.8 x 9.8 x 4.7") | 361 x 289 x 165mm (14.2 x 11.38 x 6.5") | 411 x 322 x 168mm (16.2 x 12.68 x 6.6") | 462 x 340 x 170mm (18.1 x 13.4 x 6.7") |
| Weight | 6kg (13.2lb) | 10.7kg (23.6lb) | 13.2kg (29.1lb) | 22kg (48.5lb) |
| Battery Life | 5 days | 12 days | 15 days | 22 days |

Battery life calculations based on 1Hz sample time